

The background of the cover is a black and white photograph of the Reed College entrance. The entrance is a large, arched doorway with a decorative wrought-iron gate. Above the arch is a stone lintel with the inscription "REED COLLEGE FREE TO ALL". The entrance is flanked by two potted trees. The building is made of brick and stone.

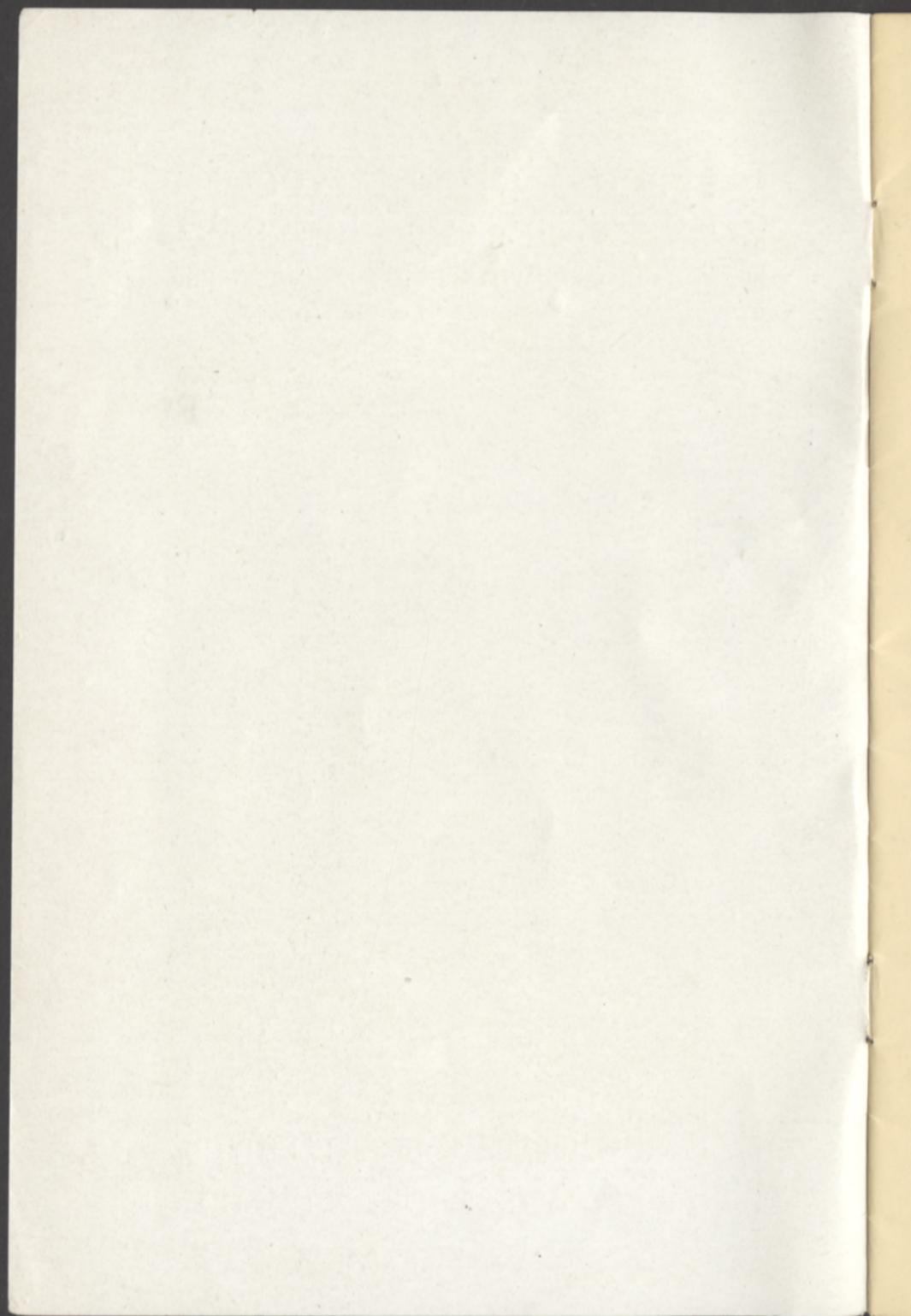
Reed College Record

P O R T L A N D : O R E G O N

N U M B E R T W E N T Y - F O U R : S E P T E M B E R - 1 9 1 6

R e e d E x t e n s i o n C o u r s e s : 1 9 1 6 - 1 9 1 7

O P E N T O T H E P U B L I C



Reed College Record

TWENTY-FOURTH BULLETIN OF THE
COLLEGE OF ARTS AND SCIENCES

SIXTH ANNUAL ANNOUNCEMENT OF
REED EXTENSION COURSES



P O R T L A N D : O R E G O N

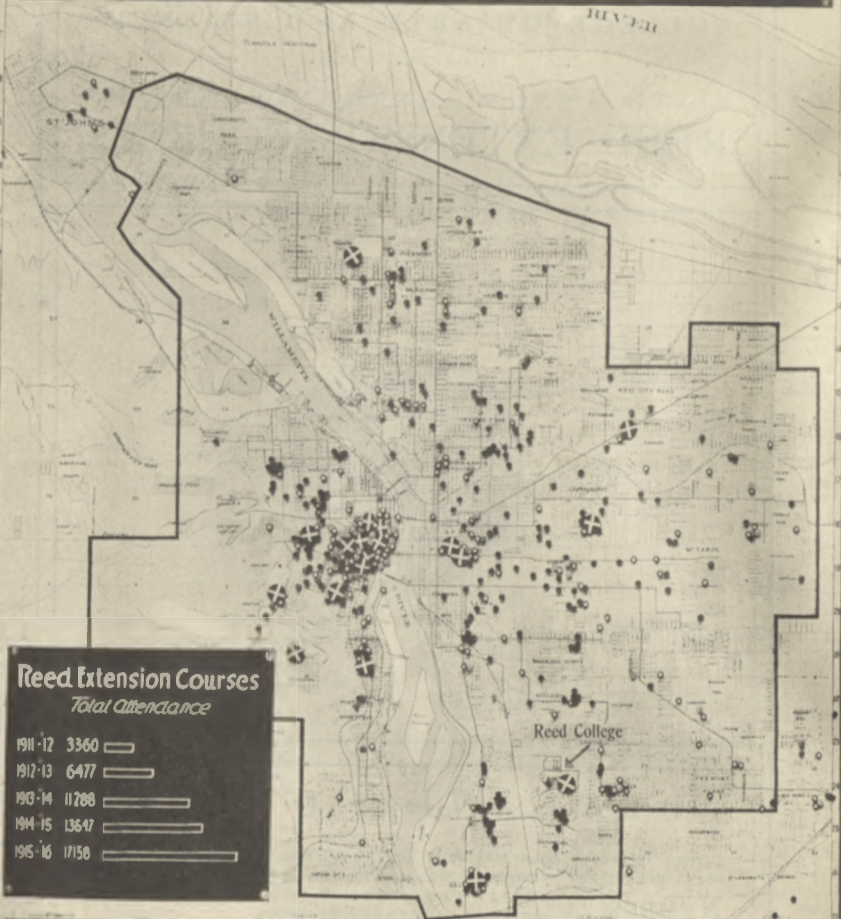
ENTERED AS SECOND CLASS MATTER FEBRUARY 21, 1911, AT THE POSTOFFICE AT
PORTLAND, OREGON, UNDER THE ACT OF JULY 16, 1894. PUBLISHED SIX TIMES A YEAR
NUMBER 24 IN JANUARY, MARCH, MAY SEPTEMBER, NOVEMBER, DECEMBER Nov., 1916

HAS REED COLLEGE REACHED YOUR HOME ?

Study this map

Make inquiries

- Black circles locate community services of Reed students
- ⊗ Black crosses show where Reed teachers have made addresses
- Green circles locate homes of Reed students
- ⊕ Large White crosses locate Reed Extension Courses



REED COLLEGE AND ITS CITY - WIDE CAMPUS

REED EXTENSION COURSES

Reed College herewith announces its Extension Lectures for 1916-1917, including twenty entirely new courses. Added to the lecturers for this academic year are Dr. George Herbert Palmer, of Harvard University; Dr. Ernest H. Lindley, of Indiana University; Dr. Percival Lowell, of the Massachusetts Institute of Technology; Dr. Charles F. Dole, of Boston and Dr. Joseph K. Hart, recently of the University of Washington.

This enlargement of the offerings of the College appears to be demanded by the growing public interest, shown by an increase in total attendance at Extension Lectures, from 3360 the first year to 17,158 last year. The city-wide distribution of Reed College educational activities is shown on the map. Additional meetings in various parts of the city, for the discussion of current political issues, will be arranged. (See page 23.)

All courses, except Study Courses and Gymnasium Courses, are open to the public, free of charges. The enrolment in Study Courses is necessarily limited, since these courses are primarily for those who wish to do systematic work, participate in discussions, write required papers and take final examinations. For each course, taken as a Study Course, the fee is two dollars, except for Number 12, in which the fee is \$12.50 each semester. A Certificate of Credit is given to anyone who satisfies the requirements of a Study Course.

Particular attention is called to the Extension Courses of the University of Oregon, listed on page twenty-four. These courses have been arranged in co-operation with Reed College, in order to avoid conflicts of subjects and dates and thus to make the total offerings to Portland as valuable and convenient as possible.

ANNOUNCEMENT OF COURSES

COURSE 1. MODERN ENGLISH PROSE WRITERS

By William T. Foster, Ph. D., LL. D., President
Reed College

At the North Portland Branch Library, 190 East
Killingsworth Avenue, near the Jefferson
High School; Tuesdays, at 8 P. M.

- | | | |
|----|---|-------------|
| 1 | Modern English: Where It Came From | October 3 |
| 2 | Modern Readers: Guidance to the Best
Books and the Worst | October 10 |
| 3 | Nathaniel Hawthorne: The Scarlet Letter | October 17 |
| 4 | Ralph Waldo Emerson: The Call to
Moral Heroism | October 24 |
| 5 | Robert Louis Stevenson: His Message to
Youth | October 31 |
| 6 | Literary Landmarks of Scotland (Illus-
trated) | November 7 |
| 7 | John Ruskin: On a Visit to the North-
west | November 14 |
| 8 | Literary Landmarks of London (Illus-
trated) | November 21 |
| 9 | Literary Landmarks of England (Illus-
trated) | November 28 |
| 10 | Charles Reade: Peg Woffington and
Other Novels | December 5 |
| 11 | Charles Dickens' England (Illustrated) | December 12 |
| 12 | Charles Dickens: The Christmas Carol
(Reading) | December 19 |

COURSE 33. THE EARLY STORY OF MAN

(Illustrated by lantern slides)

By William Fielding Ogburn, Ph. D.,
Professor of Economics and Sociology, Reed College
In Library Hall, Central Library; Mondays,
at 8 P. M.

- | | | |
|---|--|-------------|
| 1 | Our Forefathers in Glacial and Inter-glacial Times | December 18 |
| 2 | How Our Present Civilization had its Beginnings and Early Growth | January 1 |
| 3 | The Races of Mankind and their Distribution | January 8 |
| 4 | How Primitive Peoples Lived | January 15 |
| 5 | Customs and Morals Under Various Environments | January 22 |
| 6 | The Primitive Hunter and the Modern City | January 29 |

COURSE 39. PROBLEMS OF REAL ESTATE DEVELOPMENT AND MANAGEMENT

(Course given with the co-operation of the Portland Realty Board)

In Room H, Central Library; Mondays, at 8 P. M.

- | | | |
|---|---|------------|
| 1 | Evolution and Growth of Cities | October 9 |
| | Hudson B. Hastings, S. B., Professor of Applied Economics, Reed College | |
| 2 | Factors of Land Values | October 16 |
| | Henry E. Reed, Assessor for Multnomah County | |
| 3 | What Constitutes Commercial and Structural Value in Buildings | October 23 |
| | Robert H. Strong, Manager of the Corbett Estate | |
| 4 | Purchasing the Home and the Low Cost House | October 30 |
| | William H. Lewis, President of the Lewis-Wiley Hydraulic Company | |
| 5 | Safeguarding Property | November 6 |
| | A. L. Veazie, Attorney | |

- | | | |
|----|--|-------------|
| 6 | The Tax Rate
William L. Brewster, Attorney | November 13 |
| 7 | Insurance | November 20 |
| 8 | The City's Housing Problem
Father Edwin V. O'Hara, Chairman of the
Industrial Welfare Commission | November 27 |
| 9 | Engineering Problems of City Development
R. H. Thompson, Member of the Seattle
City Council | December 4 |
| 10 | Civic Development
Hudson B. Hastings | December 11 |

COURSE 40. BOY SCOUTS AND SCOUTING

In Library Hall, Central Library; Wednesdays,
at 8 P. M.

- | | | |
|---|--|------------|
| 1 | What the Boy Scouts Are and What
They Do
James E. Brockway, Scout Executive | October 4 |
| 2 | Wood Craft
George Estes, Naturalist | October 11 |
| 3 | The Boy as an Animal
Harry Beal Torrey, Professor of Biology,
Reed College | October 18 |
| 4 | Hiking
Frank Branch Riley, President of the Mazamas
Camping
A. G. Tindolph, Scout Master | October 25 |
| 5 | Chivalry and Sex Life
W. T. Fletcher, Principal of the
James John High School | November 1 |
| 6 | Local Plant Life
S. D. Briggs, Jefferson High School
Animals of Oregon
Carl D. Shoemaker, State Game Warden | November 8 |

- 7 The Life of Primitiv Men and Modern
Play November 15
William Fielding Ogburn, Professor of Eco-
nomics and Sociology, Reed College
- 8 Signaling November 22
F. E. Patterson, Commandant, Hill Military
Academy
- Knotting and Splicing
John Malone, Chief Master at Arms, United
States Navy
- 9 How and Why Boy Scout Activities
Educate November 29
Joseph K. Hart, Assistant Professor of
Education, Reed College
- 10 First Aid December 6
Calvin S. White, M. D., Medical Examiner,
Reed College
- 11 Scouts and Social Servis December 13
Harry H. Moore, Executiv Secretary, Oregon
Social Hygiene Society
- 12 Home Life of Wild Birds (Illustrated) December 20
William L. Finley, State Biologist
- 13 Tracking and Stalking December 27
George Estes, Naturalist
- Map Making
James Y. Franklin, United States Forest Ranger
- 14 Rock Formations and the Earth's Sculp-
ture January 3
William Conger Morgan, Professor of
Chemistry, Reed College
- 15 Community Betterment and Boy Train-
ing January 10
W. W. Cotton, President of the Portland
Council of Boy Scouts

[A pamphlet giving further information about Course 40 may be obtained on application to Reed College or to Boy Scout Headquarters, Journal Building, Portland.]

COURSE 42. A STUDY OF SELECTED DRAMAS OF
HEBBEL

By Jasper Jacob Stahl, A. B., Assistant Professor of
Germanic Languages, Reed College

In Room H, Central Library; Thursdays, at 8 P. M.
Study Course. Enrolment limited

- | | | |
|---|--|-------------|
| 1 | The Basis of Hebbel's Dramatic Activity | October 19 |
| 2 | Pantragism—a Theory of the Tragic | October 26 |
| 3 | On Certain Canons of Dramatic Criticism | November 2 |
| 4 | Maria Magdalena—the Beginnings of the Social Drama in Europe | November 9 |
| 5 | Maria Magdalena—continued | November 16 |
| 6 | Herod and Mariamne—the Work of the Mature Artist | November 23 |
| 7 | Gyges and His Ring—a Masterpiece | December 7 |
| 8 | Hebbel and the Contemporary Drama | December 14 |

COURSE 43. HOW NATURE DETERMINS HISTORY
(Illustrated by lantern slides)

By William Conger Morgan, Ph. D., Professor of Chemistry, Reed College

In Library Hall, Central Library; Thursdays,
at 8 P. M.

- | | | |
|---|---|------------|
| 1 | Natural Factors Determining the Destinies of Nations—The "Bread and Butter" School of History | January 4 |
| 2 | World Movements and their Causes—The Pulse of Nature | January 11 |
| 3 | Europe and the Mediterranean—The Dead Sea as a Rain Gauge | January 18 |
| 4 | Early American History—The Colonial Period | January 25 |
| 5 | Later United States History—Precipitation, Panics and Politics | February 1 |
| 6 | The West—Its History and Outlook | February 8 |

COURSE 44. POWER

(Illustrated by lantern slides and experimental demonstrations)

By Ansel Alphonso Knowlton, Ph. D., Professor of
Physics, Reed College

In Library Hall, Central Library; Thursdays,
at 8 P. M.

1	New Ways for Old	February 15
2	Store Houses of Energy	February 22
3	Work and Waste	March 1
4	Electrical Machinery	March 8
5	Water Power	March 15
6	The Lights of the City	March 22

COURSE 45. THE LIFE OF THE SEA

(Illustrated by lantern slides)

By Harry Beal Torrey, Ph. D., Professor of Biology,
Reed College

In Library Hall, Central Library; Thursdays,
at 8 P. M.

1	To Japan on the United States Fisheries Steamer "Albatross"	March 29
2	At the Bottom of the Mid-Pacific	April 5
3	The Open Ocean	April 12
4	Along the Northwest Coast, I	April 19
5	Along the Northwest Coast, II	April 26
6	Along the Northwest Coast, III	May 3

COURSE 41. MODERN SOCIAL PROBLEMS

By William Fielding Ogburn, Ph. D.
Professor of Sociology, Reed College

At the Chamber of Commerce; Tuesdays,
at 8 P. M.

Study Course. Enrolment limited

- | | | |
|----|---|-------------|
| 1 | Human Nature and the Artificial Nature
of Modern Civilization | October 3 |
| 2 | An Economic Cause of all Modern Social
Problems | October 10 |
| 3 | A Society Changing, but Producing Mal-
adjustments thru Unequal Rates of
Change | October 17 |
| 4 | What the Complexity and Heterogeneity
of Modern Society Mean | October 24 |
| 5 | The Evolution of Industry | October 31 |
| 6 | Poverty | November 7 |
| 7 | The Family | November 14 |
| 8 | Government | November 21 |
| 9 | The Labor Movement | November 28 |
| 10 | Social Justis versus Individualism | December 5 |
| 11 | Social Reform | December 12 |
| 12 | International Relations | December 19 |

COURSE 52. MODERN MESSAGES OF SCIENCE

At Turn Hall, Fourth and Yamhill Streets; Fridays,
at 8 P. M.

- | | | |
|----|---|-------------|
| 1 | Chemistry: The New Materialism (Illustrated) | October 6 |
| | William Conger Morgan | |
| 2 | Astronomy: Worlds in the Making (Illustrated) | October 13 |
| | William Conger Morgan | |
| 3 | Biology: The Breeding of Men (Illustrated) | October 20 |
| | Harry Beal Torrey | |
| 4 | Biology: Some Biological Superstitions | October 27 |
| | Harry Beal Torrey | |
| 5 | Physics: The Contest of Man and Nature (Illustrated) | November 3 |
| | Ansel Alphonso Knowlton | |
| 6 | Anthropology: The Life of the Cave Man (Illustrated) | November 10 |
| | William Fielding Ogburn | |
| 7 | Anthropology: The Primitiv Hunter and the Modern City (Illustrated) | November 17 |
| | William Fielding Ogburn | |
| 8 | Psychology: The Riddle of Human Nature | November 24 |
| | Eleanor Rowland | |
| 9 | Philosophy: Modern Ethical Theories | December 1 |
| | Joseph Kinmont Hart | |
| 10 | Education: Recent Searches for Scientific Foundations | December 8 |
| | William Trufant Foster | |

**COURSE 46. PSYCHOLOGY IN RELATION TO COMMERCE
AND INDUSTRY**

By Ernest Hiram Lindley, Ph. D., Professor of Philosophy
and Psychology, Indiana University

In Library Hall, Central Library; Mondays and
Wednesdays, at 8 P. M.

- 1 Some Factors in Practical Success. The
Analysis of Personal Influence and of
Personal Efficiency February 5
- 2 The Hidden Powers of Men; How Re-
veald and How Tapped February 7
- 3 Mind and Body: How the Mind May
Win Mastery February 12
- 4 Will-power, with Suggested Exercizes February 14
- 5 The Mastery of Desirable Feeling-tone.
The Control of Fear, Anger, Worry,
Enthusiasm and Good-will February 19
- 6 On Learning to Observ and to Concen-
trate. Illusions of Everyday Life.
Tests and Exercizes February 21
- 7 The Training of Memory and Imagina-
tion. Tests and Exercizes February 26
- 8 The Psychology of Advertising and of
Salesmanship February 28
- 9 The Art of Judging Men. Review of
Methods Employd March 5
- 10 The Art of Judging Men. Choosing Em-
ployees. Tests and Exercizes March 7
- 11 Wider Aspects of Scientific Manage-
ment March 12
- 12 Self-mesurement and Continued Growth March 14



DR. ERNEST HIRAM LINDLEY
of Indiana University
Visiting Professor at Reed College

COURSE 47. THE MIND IN HEALTH AND IN DISEASE

**By Ernest Hiram Lindley, Ph. D., Professor of Philosophy
and Psychology, Indiana University**

**In Library Hall, Central Library; Mondays and
Wednesdays, at 8 P. M.**

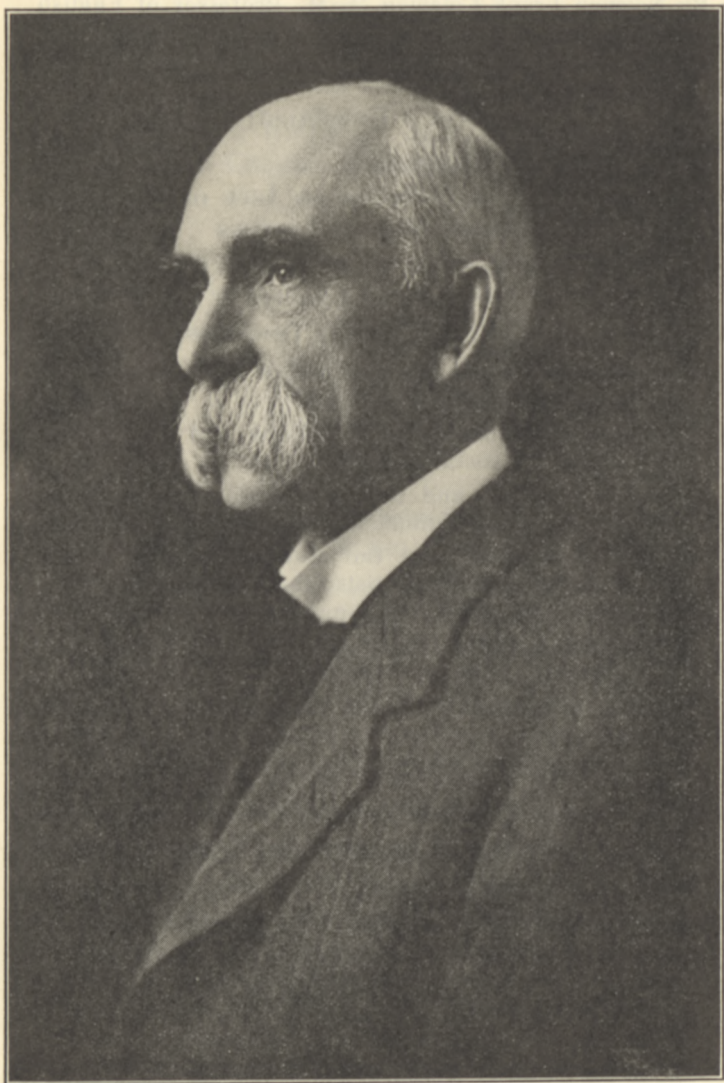
- | | | |
|---|--|----------|
| 1 | The Mental Factor in Disease. Suggestion and the Faith State | March 19 |
| 2 | Mind and Faith Cures, Mental Science, Christian Science, Divine Healing, and Miracle Cures | March 21 |
| 3 | Scientific Applications of Mental Factors. Methods of Modern Psychotherapy | March 26 |
| 4 | The Strategy of Healthy-mindedness. Importance in Everyday Life. Means of Attainment | March 28 |

COURSE 48. SPIRITUAL EPOCHS IN ENGLISH POETRY

**By George Herbert Palmer, A. M., LL. D., Litt. D., L.H.D.,
Alford Professor of Natural Religion, Moral
Philosophy, and Civil Polity, Emeritus,
Harvard University**

**In Lincoln High School Auditorium; Mondays and
Wednesdays, at 8 P. M.**

- | | | |
|---|--------------|----------|
| 1 | Introduction | April 2 |
| 2 | Chaucer | April 4 |
| 3 | Spenser | April 9 |
| 4 | Herbert | April 11 |
| 5 | Pope | April 16 |
| 6 | Wordsworth | April 18 |
| 7 | Tennyson | April 23 |
| 8 | Browning | April 25 |



DR. GEORGE HERBERT PALMER
of Harvard University
Visiting Professor at Reed College

COURSE 49. KING LEAR

By Norman Frank Coleman, A. M., Professor of English
In Room H, Central Library; Tuesdays, February
13 to March 20, at 8 P. M.

Study Course. Enrolment limited

COURSE 50. THE OUTLOOK ON LIFE OF CONTEMPORARY MEN OF LETTERS

By Harold Guy Merriam, A. M., Assistant Professor of
English, Reed College

In Room H, Central Library; Tuesdays, at 8 P. M.

- | | |
|--|----------|
| 1 Alfred Noyes and the Wonders of Life;
a romantic outlook | March 27 |
| 2 James Oppenheim, W. W. Gibson and
Society: a social outlook | April 3 |
| 3 John Masefield and the Lost Cause of
Today: an individualistic outlook | April 10 |
| 4 Our Squint-eyed and Our Round-eyed
Novelists and Dramatists: the micro-
scopic and the telescopic outlooks | April 17 |
| 5 Bridges, Cawein, Lowell and the Free
Versifiers: esthetic outlooks | April 24 |
| 6 H. G. Wells, Bernard Shaw: rationalistic
outlooks | May 1 |

COURSE 51. RENASCENCE OF DRAMA

By Harold Guy Merriam, A. M.

At the Laurelhurst Club; Wednesdays, at 8 P. M.

- | | |
|--|------------|
| 1 The Many Ideas of Today: Experiment
and Experience | January 3 |
| 2 The Re-discovery of Art in Drama—the
Visual Appeal | January 10 |
| 3 The Nineteenth Century and the Twen-
tieth Century Technic: the Discovery
of Sincerity | January 17 |
| 4 The People in Plays: Research versus
Imagination | January 24 |

**COURSE 53. SOCIAL IDEALS IN NINETEENTH CENTURY
ENGLISH LITERATURE**

By Norman Frank Coleman, A. M., Professor of English,
Reed College

At Oregonian Building; Saturdays, at 12 M.
Study Course. Enrolment limited.

1 Michael	Wordsworth 1800
2 Prometheus Unbound	Shelley 1819
3 Palace of Art	Tennyson 1832
4 Pippa Passes	Browning 1841
5 The Nature of Gothic	Ruskin 1854
6 A Dream of John Ball	Morris 1888

**COURSE 54. LECTURE-RECITALS OF PIANO AND ORGAN
MUSIC**

By Max Pearson Cushing, Ph. D.—Organ
Louise Huntley—Piano

At Reed College; Tuesdays, at 8 P. M., beginning
September 26

COURSE 55. PRINCIPLES OF VOCATIONAL EDUCATION

By Joseph Kinmont Hart, Ph. D., Assistant Professor of
Education, Reed College

At Reed College; Saturdays, at 10 A. M., beginning
October 7

Study Course. Enrolment limited

Students who satisfy the requirements of this course
will receive a certificate which will be accepted by the
State Department of Education as credit toward a state
teacher's certificate. See also, list of University of Ore-
gon Extension Courses, page 24.

COURSE 59. A WORKING PHILOSOPHY OF LIFE

By Charles Fletcher Dole, A. M., D. D.

East Portland Branch Library, at 8 P. M.

1	Do We Live in a Universe?	November	30
2	The Life Worth Living	December	1
3	The Good Will	December	2
4	Democracy on Trial	December	4
5	Humanity and Patriotism	December	5
6	The United States as a World Power	December	6

COURSES IN PHYSICAL EDUCATION

By Charles Selwyn Botsford, Assistant Professor of

Physical Education for Men, and

Sigurd Grondahl, Assistant

Ray Loyd Lapham, Assistant

John Dambach, Assistant

Application for membership should be made to
Professor Botsford.

COURSE 56

Extension Courses in Physical Education for men
will be offerd in the Reed College gymnasium on
Monday evenings, beginning September 18.

There is a membership fee of one dollar to be
used for supplies.

COURSE 57

Extension Courses in Physical Education for
boys will be offerd in the Reed College gymnasium
on Friday evenings, beginning September 22.

There is a membership fee of fifty cents to be
used for supplies.

COURSE 58. COMMERCIAL AND INDUSTRIAL METHODS
(Illustrated with motion pictures)

A course in Commercial and Industrial Methods, illustrated with various motion picture films, will be offered during the year at times and places to be announced in a separate bulletin. The films for the course are furnished by various co-operating organizations, including the Chambers of Commerce of San Francisco, Seattle, Spokane and Portland, the California Fruit Cannery Association, the United States Department of Commerce and the Pacific Coast Shippers' Association.

See Reed College Record, Number 23, for further information concerning courses in commerce and industries.

LECTURES ON ASTRONOMY

Dr. Percival Lowell, Director of the Lowell Observatory, will give lectures on "The Far Horizon of Science" and "Great Discoveries and Their Reception," at the Lincoln High School, October 10 and 11 at 8 P. M.

COURSE 12. NATURAL SCIENCE

Study Course: Fee for each semester, \$12.50

By

William Conger Morgan, Ph. D., Professor of Chemistry, Reed College

Ansel Alphonso Knowlton, Ph. D., Professor of Physics, Reed College

Harry Beal Torrey, Ph. D., Professor of Biology, Reed College

William Fielding Ogburn, Ph. D., Professor of Economics and Sociology, Reed College

Eleanor Rowland, Ph. D., Professor of Psychology, Reed College

At Reed College, in Room 114, at 3 P. M.

Eighty-nine lectures illustrated by stereopticon views and laboratory demonstrations

1	A Scientific Age	September 12
2	The Common Sense of Science	September 14
3	Worn-out Beliefs	September 18
4	A Small Chance	September 19
5	World Building	September 21
6	Sun Beams	September 25
7	A Glimpse Thru a Prism	September 28
8	The Starry Hevens	October 2
9	The Life of a Star	October 5
10	The Most Interesting Star	October 9
11	The Martians and Others	October 12
12	"The Solid Earth"	October 16
13	"The Everlasting Hills"	October 19
14	The Record of the Rocks	October 23
15	The Autobiografy of the Earth	October 26
16	How Geographic Conditions Affect Or- ganisms	October 30
17	How Geografy Determins History	November 2
18	The Alfabet of Chemistry	November 6
19	The Old and the New Way	November 7
20	Is Anything Really Lost?	November 9
21	The Air We Breathe	November 13
22	The Ancient Water Question	November 16
23	The Fuel We Burn	November 20
24	How Plants and Animals Live	November 21
25	The World of Waste	November 23
26	The Whitherward of Chemistry	November 24
27	The Make-up of Matter	November 27
28	The Smallest Thing Ever Discoverd	November 28
29	Is There One Fundamental Form of Matter?	December 4
30	Transmutation of Elements	December 5

31	Evolution and Unity in Nature	December 7
32	The World of Motion	December 11
33	Little Things and Their Motions	December 12
34	Man and Machinery	December 14
35	Electric Currents	December 18
36	Dynamos and Motors	December 19
37	How Portland Is Lighted	December 21
38	Water Falls	January 8
39	Telegraf and Telefone	January 9
40	Wireless Communication	January 11
41	Wind and Rain	January 15
42	Air Waves	January 16
43	Conservation and Degradation	January 18

SECOND SEMESTER

44	Field Notes	January 30
45	Harvey the Physiologist	February 1
46	The Physical Basis of Life	February 5
47	Growth and Development	February 6
48	Organisms as Self-regulating Machines	February 8
49	Pasteur	February 12
50	Parasitism and Disease	February 13
51	Charles Darwin and the Origin of Species	February 15
52	The Story of the Horse	February 19
53	The Significance of Vestigial Structures	February 20
54	Heredity and Environment	February 26
55	Gregor Mendel and Modern Genetics	February 27
56	Race Betterment	March 1
57	The Antiquity of Man	March 5
58	The Evolution of Culture	March 6
59	Origins of Social Institutions	March 8
60	The Economic Interpretation of History	March 12
61	The Industrial Revolution	March 13
62	The Nature of Modern Social Problems	March 15
63	The Labor Movement	March 19

64	The Family	March 20
65	Functions of Government	March 22
66	Social Justis	April 2
67	Social Reform	April 3
68	Socialism	April 5
69	Population	April 9
70	War	April 10
71	International Relations	April 12
72	Conduct as a Physiological Problem	April 16
73	Instinct	April 17
74	Physiological Aspects of the Learning Process	April 19
75	Problems of Human Behavior	April 23
76	The Relation of Human to Infra-human Behavior	April 24
77	Experimental Psychology as a Science	April 26
78	Association Processes, Human and Infra-human	April 30
79	The Problem of Speed in Associations	May 1
80	The Problem of Quality of Associations	May 3
81	Retention and Recall	May 7
82	Attention	May 8
83	Suggestion	May 10
84	Emotional Processes, Human and Infra-human	May 14
85	Emotional Processes, Normal	May 15
86	Emotional Processes, Abnormal	May 17
87	The Relation of Psychology to Medicine	May 21
88	The Relation of Psychology to Industry	May 22
89	The Relation of Psychology to Social Problems	May 24

Lectures 1-5, 8-27, 29-31 will be given by Dr. Morgan; lectures 6, 7, 28, 32-43 by Dr. Knowlton; lectures 44-56, 72-74 by Dr. Torrey; lectures 57-71 by Dr. Ogburn; lectures 75-89 by Dr. Rowland.

CORRESPONDENCE

To receive prompt attention, all inquiries concerning the College should be address to the *Secretary of Reed College, Portland, Oregon*. Such inquiries will be referd immediately to the proper officers. Only personal communications should be address to individual members of the Faculty.

REED COLLEGE RECORD

The official publication of the College is the Reed College Record, of which the current Catalog is Number Twenty-one. Any number will be maild on request. Persons wishing to be placed on the mailing list should indicate their reasons for wishing to receive the Record regularly.

VESPER SERVICES

Vesper Services are held in the Reed College Chapel on Sundays at four o'clock, and are open to the public. There is a recital on the Olds Memorial Organ at the close of each servis.

DISCUSSIONS OF CURRENT POLITICAL ISSUES

As in previous years, Reed College will provide speakers for meetings in various parts of the City for the discussion of current political topics, particularly the mesures referd to the people for their votes in the next election. The College endeavors by this means to aid in the dissemination of dependable and non-partisan information for the guidance of citizens. All arrangements are made with Professor William F. Ogburn of Reed College.

UNIVERSITY OF OREGON COURSES

Given by the University of Oregon in the City of Portland,
Friday and Saturday evenings

(At the Central Library unless otherwise stated)

SUBJECT	DAY	DATES	INSTRUCTOR
ENGLISH	Bi-weekly		
English Composition	Friday	October to May	Mrs. Parsons
Short Story	Saturday	October to May	Mrs. Parsons
Drama	Saturday	October to May	Mrs. Parsons
PHILOSOPHY	Bi-weekly	October to Feb'y	Dr. Rebec
	Friday		
MUSIC			
Musical Understanding	Bi-weekly		
	Friday	October to May	Dr. Landsbury
ARCHITECTURE	Weekly		
Graphic Statics	Friday	October to May	Professor Adams
	(AT THE LABOR TEMPLE)		
Descriptiv			
Geometry	Saturday	October to May	Professor Adams
	(AT THE PORTLAND ARCHITECTURAL ATELIER)		
	Monthly		
Pen and Pencil	Saturday	October to May	Mr. Rosenberg
	(AT THE PORTLAND ARCHITECTURAL ATELIER)		
EDUCATION			
Child Psychology	Weekly		
	Friday	October to Jan'y	Dr. DeBusk
Educational			
Tests and			
Mesurements	Friday	February to May	Dr. Ayer
(These courses and the Reed Extension courses in Education are supplementary to each other. When completed with credit, they are accepted by the State Department of Education toward State Teachers' Certificates)			
PUBLIC SPEAKING	Arrangements not completed, but similar to work of last year.	
SCIENCE LECTURE COURSE..	(Botany, Zoology, Astronomy and Geology for grade introduction to Nature Study Work)	arrangements not completed	
ARCHITECTURE	Lecture Course—Arrangements not completed but similar to work of last year	Mr. Lawrence
Also a course on "What is Art?" before the Portland Women's Club Twice a month			
Dr. Rebec			
Further information concerning Extension Courses and Correspondence Study Courses conducted by the University of Oregon may be had upon application to the University, Eugene, Oregon.			

